

**USE AND MAINTENANCE MANUAL
IMPORTANT! KEEP FOR FUTURE REFERENCE!**

MARTINA

YOUR FRIENDLY ROBOT



**If you have any questions or problems with this product,
please do NOT return it to the place of purchase.**

Please call: 1-800-338-1850



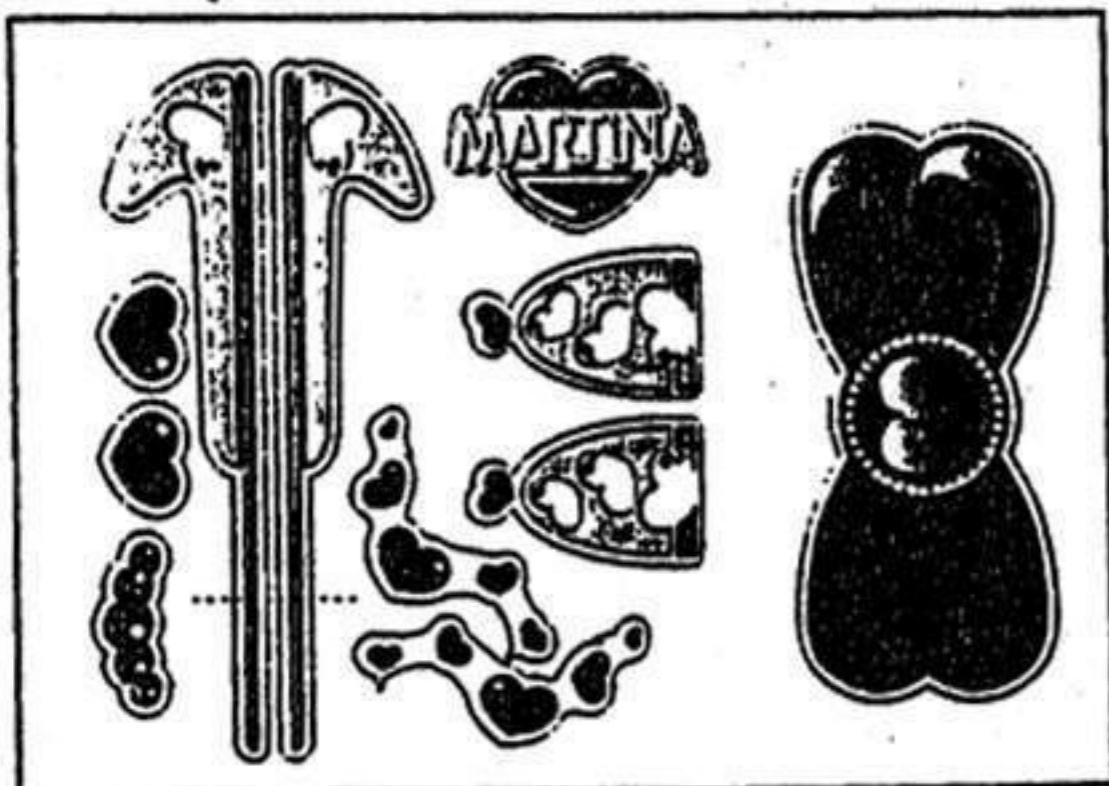
GP Toys, Inc.

111 Barclay Blvd., Suite 200, Lincolnshire, IL 60069

**⚠ WARNING: CHOKING HAZARD - Small parts.
Not for children under 3 years.**

CONTENTS OF PACKAGE

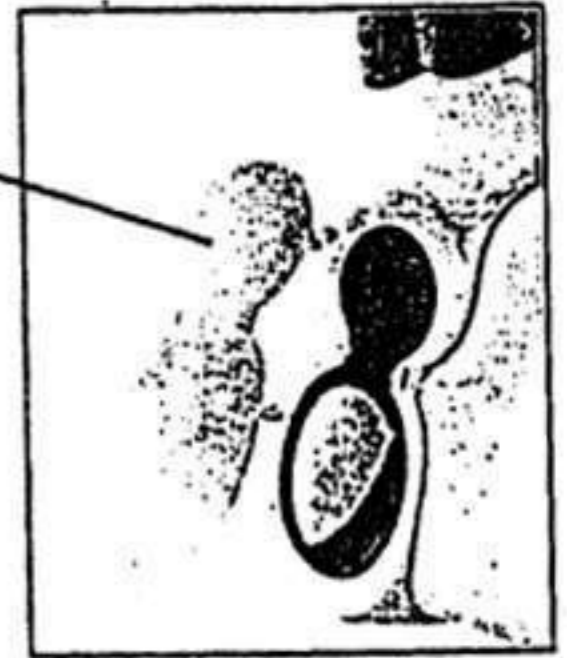
- MARTINA the robot with Bow Shaped Radio Control Transmitter
- Hairbrush
- Comb
- Mirror
- Tray
- 2 Play Rings
- Sticker Sheet
- Diary
- Instruction Booklet - Please read carefully!



MARTINA'S FEATURES

Bow Shaped
Radio Control Transmitter

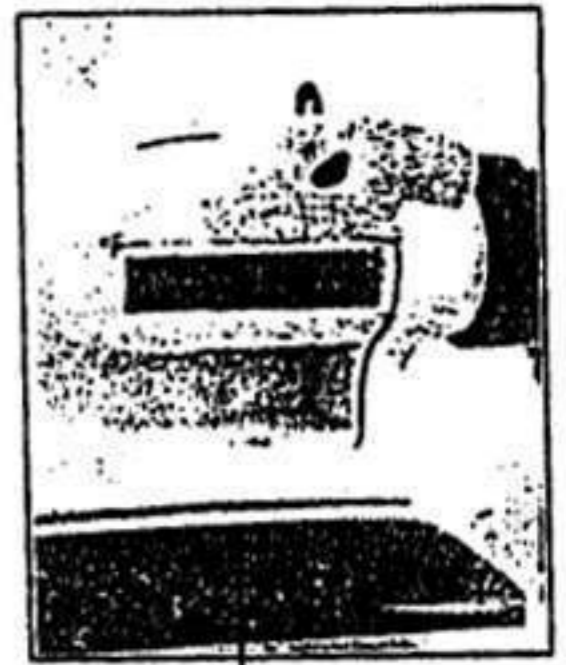
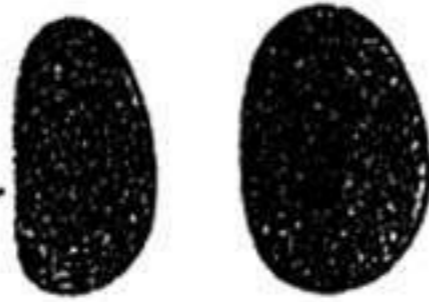
Secret
Compartments
for comb, brush
and mirror



Head Moves
(manually)



Eyes Light Up



Secret
Compartment

Heart with
Secret Drawers



Arms Move
(manually)



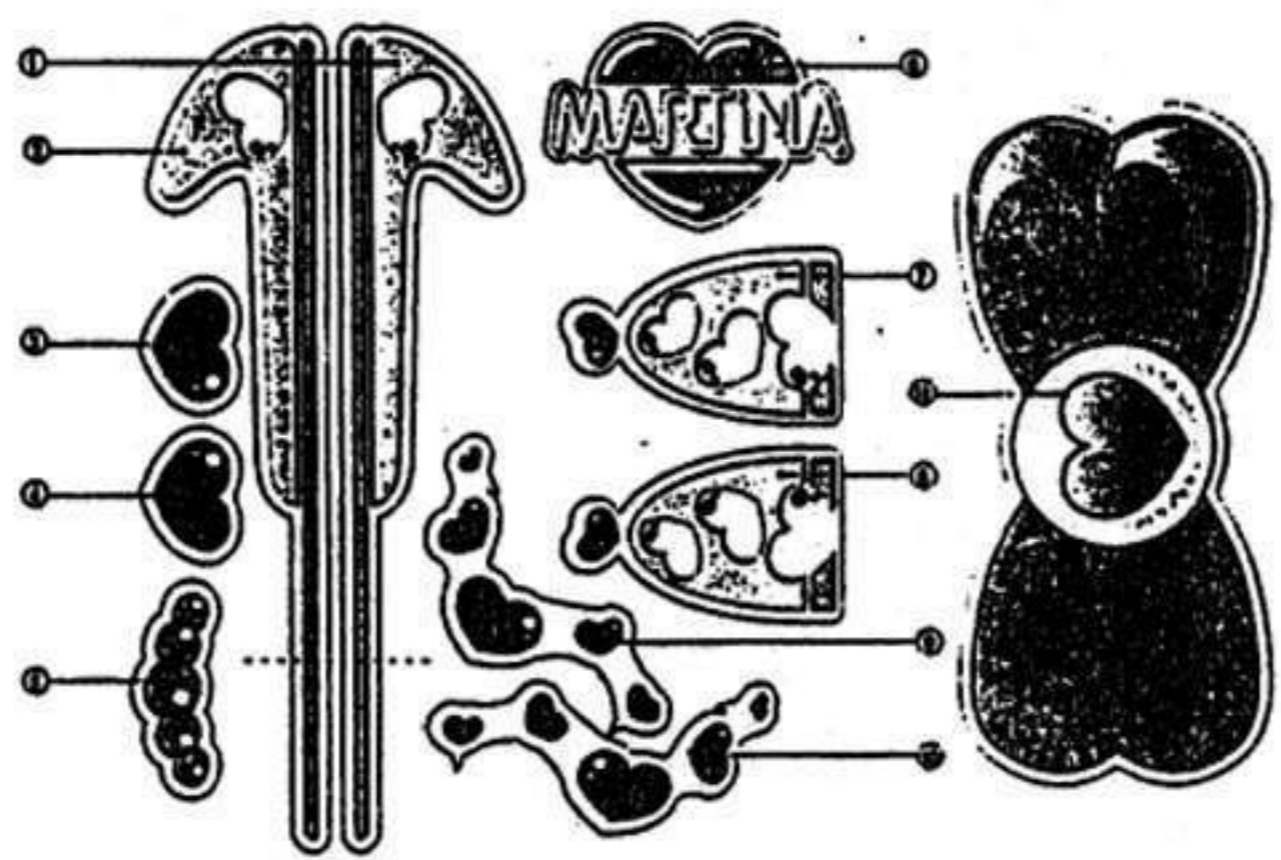
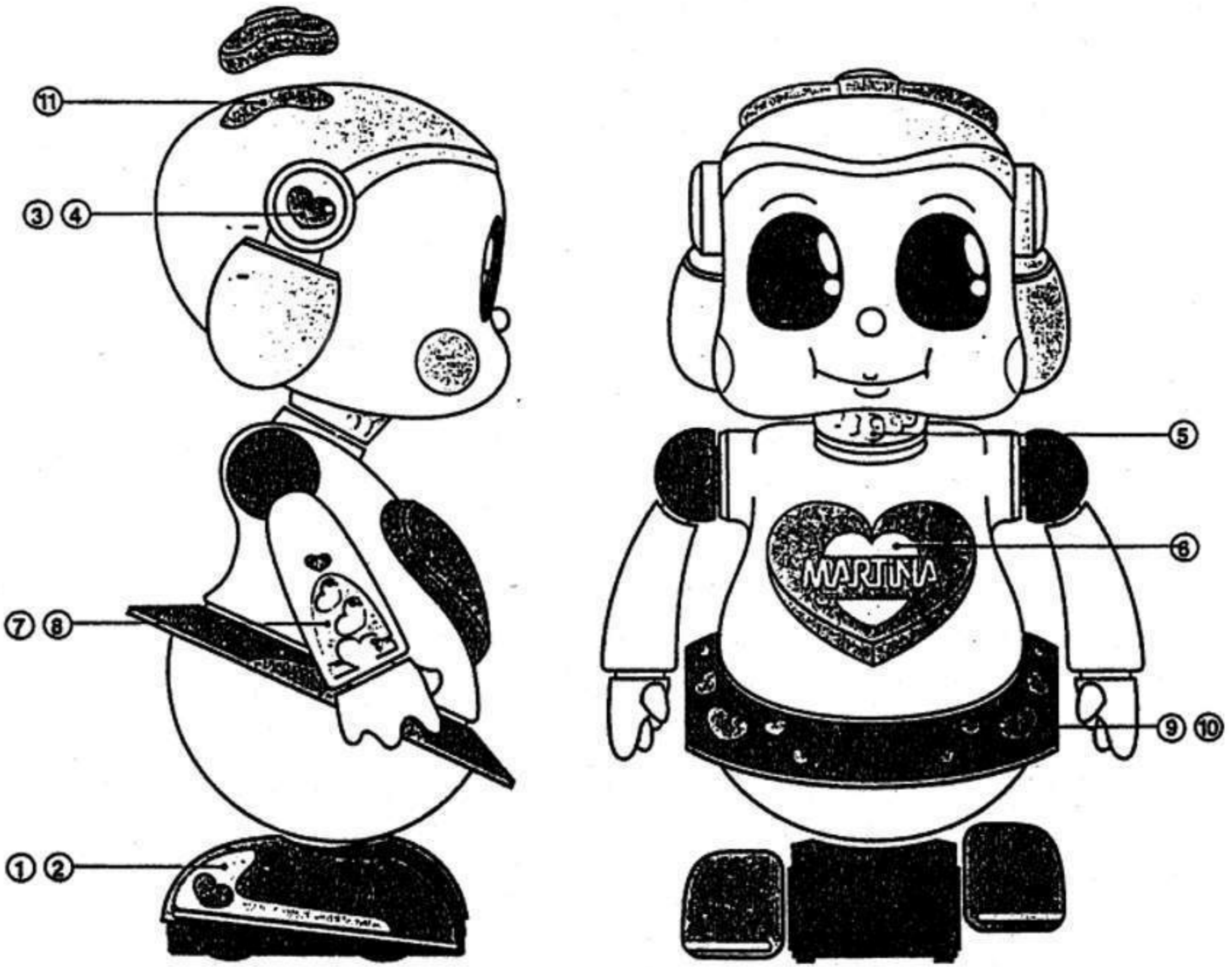
Hands Grip

Battery Compartment
(see page 5)



HOW TO APPLY THE STICKERS

Follow the diagram below to decorate Martina with the stickers from the sticker sheet.



BATTERY INSERTION

Batteries must be inserted into both the MARTINA Robot and Radio Control Transmitter.

- BATTERY INSERTION MUST ONLY BE DONE BY AN ADULT!
- MAKE SURE BOTH ROBOT AND RADIO CONTROL SWITCHES ARE IN THE OFF POSITION BEFORE CHANGING BATTERIES.
- OLD BATTERIES SHOULD BE REMOVED FROM THE TOY.
- DO NOT MIX OLD AND NEW BATTERIES.
- DO NOT USE RECHARGEABLE BATTERIES.
- ALKALINE BATTERIES ARE RECOMMENDED.
- DO NOT MIX ALKALINE AND STANDARD (CARBON-ZINC) BATTERIES.

MARTINA requires 4 D Cell Alkaline batteries. Remove battery cover on underside of robot. Insert 4 D Cell Alkaline batteries as indicated, following the polarities (+) (-) as shown in Figure 1.

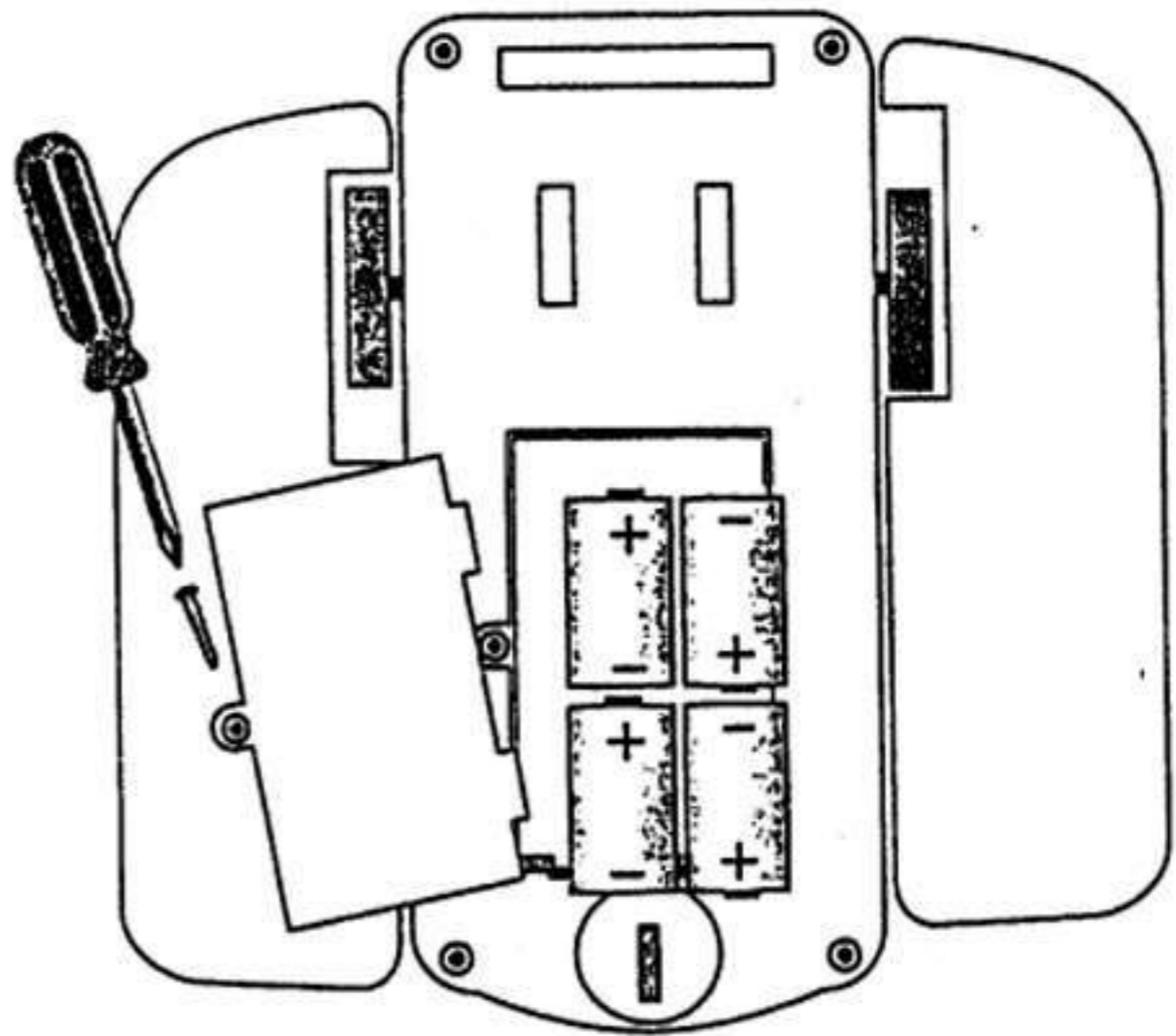


Figure 1

Be sure batteries are firmly in place. Close battery cover.

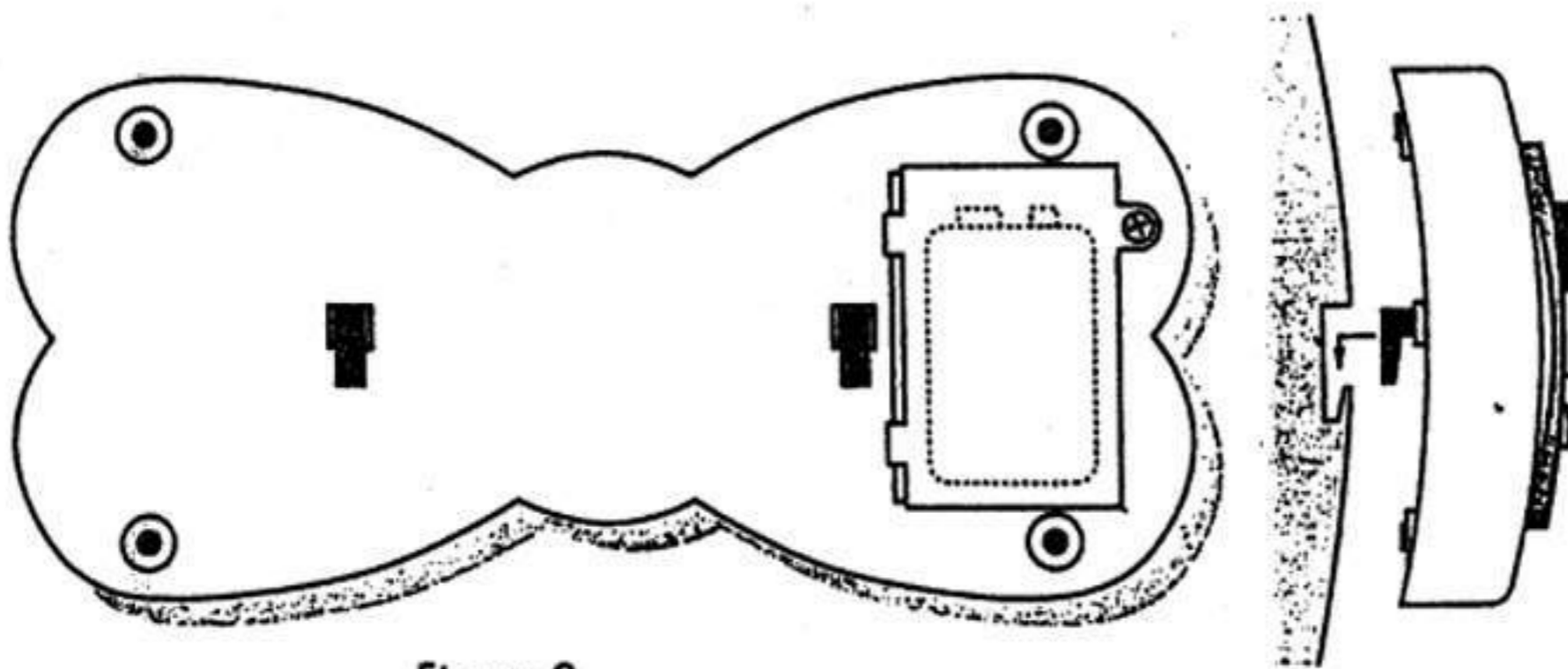


Figure 2

The Radio Control Transmitter requires 1 9V Alkaline battery.

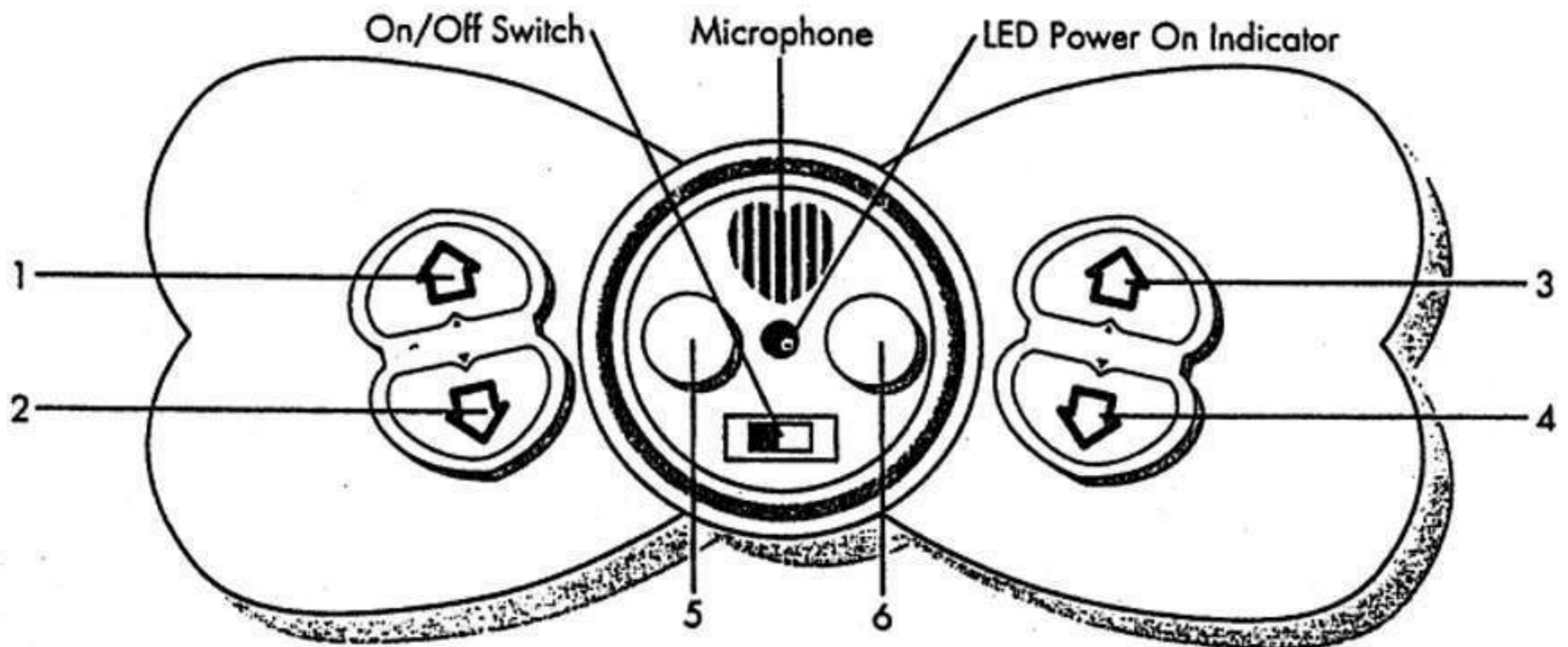
Open battery cover at back of transmitter as shown in Figure 2. Insert one 9V Alkaline battery in the compartment, following the polarities as shown. Be sure battery is firmly in place and fits within the compartment. Close battery cover.

OPERATING MARTINA, TRAY AND HANDS

BEFORE USING MARTINA FOR THE FIRST TIME, REMOVE ALL PACKAGING TAPE. DISCARD TAPE.

- Turn the on/off switch to the on position on both MARTINA and the Transmitter.
- The Transmitter LED will light up and MARTINA's eyes will light up.

RADIO CONTROL TRANSMITTER FEATURES



When you Press:	Martina Will:
Button 1	Move Forward slowly and turn right
Button 2	Move Backward slowly and turn right
Button 3	Move Forward slowly and turn left
Button 4	Move Backward slowly and turn left
Buttons 1 + 3	Move Forward
Buttons 2 + 4	Move Backwards
Buttons 1 + 4	Turn Right quickly
Buttons 2 + 3	Turn Left quickly
Button 5 and talk into Microphone	Say whatever you say
Button 6 and talk into Microphone	Talk and Blush

FOR BEST PERFORMANCE, USE MARTINA ON A SMOOTH CLEAN SURFACE.

MARTINA CAN CARRY THINGS FOR YOU AND YOUR FRIENDS!

Microphone - Hold the transmitter about 5 inches from your mouth and talk into the microphone. MARTINA will say whatever you say.

Put things in MARTINA's hands and close her hands around them.

Insert the Tray handle into MARTINA's hand. The Tray can carry items weighing up to a maximum of 1 pound.

NOTE: If MARTINA makes a whistling sound when you speak into the microphone be sure the transmitter is at least 3 feet away from the robot.

TROUBLESHOOTING GUIDE

Problem:

Product not working at all.

Possible causes:

- Check: Switch on Robot and Transmitter are turned to "on".
- Low or Dead Batteries in Robot and/or in Transmitter - change batteries
- Incorrect insertion of Batteries (see page 5)

Problem:

Intermittent function on movement and voice.

Possible causes:

- Loose and/or dirty Battery contacts - bend metal contacts slightly to make a better connection with batteries. Clean contacts with a dry cloth or remove dirt.
- Interference with other radio signals - move to open area.

Problem:

Only some functions working. Robot moves slowly.

Possible causes:

Low batteries (see page 5)

Problem:

Slight hissing sound coming from transmitter.

Possible causes:

- Too far out of range or too close to electrical objects or buildings. Move closer to robot.
- Move robot to open area.

Problem:

Buttons are pressed but Robot does not respond. Voice feature works.

Possible causes:

- Too far out of range. Move closer to robot.
- Too near concrete wall. Move robot to open area.

Problem:

High pitch noise coming from robot.

Possible cause:

Transmitter is too close to robot. Move away from robot.

Problem:

Uneven/jerking action WHEN robot moves forward or turns.

Possible causes:

- Foreign matter (dirt, fibers, etc.) caught in drive wheels. Use tweezers and carefully remove foreign matter.
- Rough and/or dirty surface. Move to a smooth/clean area.

IF, AFTER CONSULTING THE GUIDE YOU CONTINUE TO HAVE A PROBLEM, PLEASE TELEPHONE OUR CUSTOMER SERVICE DEPARTMENT AT: 1-800-338-1850

SAFETY RULES

- Do not leave MARTINA outside at night: the humidity will damage her
- Do not use MARTINA in dangerous places (e.g. roads, stairs, hills).
- Do not lift fragile objects which could break (vases, glasses, etc.).
- Do not play in puddles or sand.
- Keep MARTINA away from heat sources.
- Keep the batteries away from fire (e.g. lighted cigarettes or matches).
- Always turn MARTINA and the transmitter to "off" when you are done playing.
- Batteries should be removed if MARTINA is not going to be used for a long time.
- Change all batteries at the same time. Do not mix old and new batteries.
- Do not drop MARTINA or knock her over; her electronic circuit could be damaged.
- Use a damp cloth only for cleaning.
- Avoid letting water get inside MARTINA.

Warning:

Changes or modifications to this unit not expressly approved by the party responsible for compliance could void the user's authority to operate the equipment.

Note:

The manufacturer is not responsible for any radio or TV interference caused by unauthorized modifications to this equipment. Such modifications could void the user's authority to operate the equipment.

GP Toys, Inc.
111 Barclay Blvd.
Suite 200
Lincolnshire, IL 60069
1-800-338-1850

